

Bird Anatomy

http://www.biology4kids.com/files/vert_bird2.html

I. Bird Anatomy- Beautiful Birds

- A. Only ___ has more species than birds
- B. Birds regulate their own....
- C. You can find birds in these four areas:
 - 1. North Pole
 - 2.
 - 3.
 - 4.

II. Physical Traits

- A. Feathers are specialized _____



- 1.
 - 2.
 - 3. **Anology:** a feather is to a bird as a _____ is to a reptile.
- B. Hard shell eggs

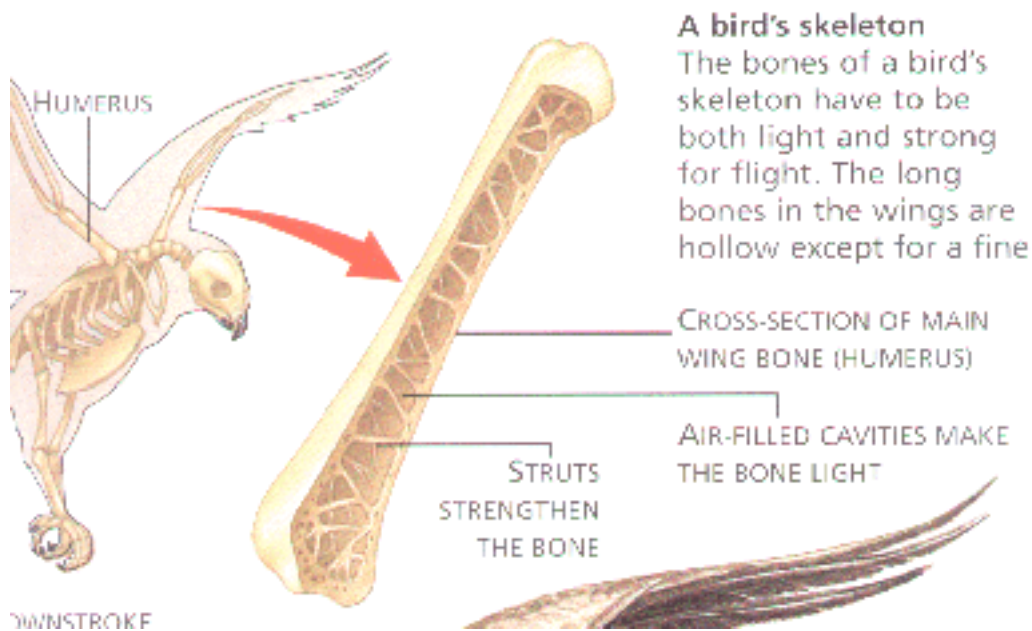


- 1. Birds were the 1st to have ...
- 2. The shell is so strong that it can survive

3. Reptile egg shells are:

4. Bird egg shells are:

C. H...



1. Light bones make the bird lighter in the air

2. Inside the bone it is:

3. These bones are ____/

III. Great at Adapting

A. Where can you find birds?

1. You can find birds....

2.

B. Birds live in lots of habitats because they are good at

1. Darwin saw this with this type of bird:

2. The beak shape depended upon...

3. Some of birds ate from ____ and some ate from ____.

C. Adaptations in birds

1. Bird wings are also different

a.

2. Bird feet are also different

- a.
- b.

IV. Picture Clues

A. Look at the peacock picture. What does the peacock do to attract the female peacocks?

1.

B. Look at the flamingo picture. What does the flamingo picture show you about adaptation?

1.

2.

V. Vocabulary

A. homeothermic

1. This word means...

B. Regulate

1. When you regulate something, you

C. Feather

1. This word means

D. Embryo

1. An embryo is a...

E. Adapting

1. If something is adapting it means it...

2. An example of adapting in birds is.....

VI. Essential Question

A. How are birds different from reptiles?

1. What physical traits make them different?

B. What adaptations help birds survive in different climates?

1. Getting food

2. Traveling (flying, walking, swimming)

3. Escaping predators

VII. Analogies

A. A feather is to a _____ as a _____ is to a reptile

B.